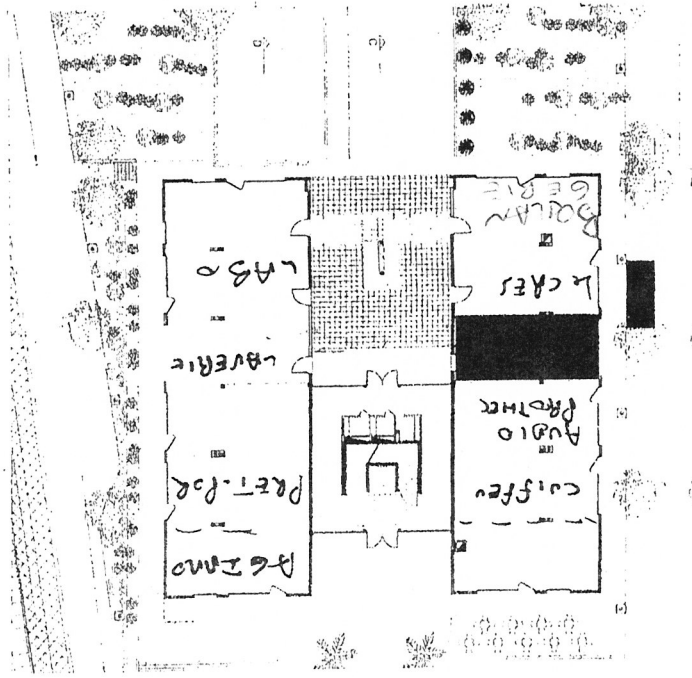


LE SYRACUSE
commune du Crès



los Continos III, 111
place Pierre Duham
8F84, 34936 Montpellier cedex5

1. *What is the purpose of the study?*
 2. *What are the research objectives?*
 3. *What is the research methodology?*
 4. *What are the results of the study?*
 5. *What are the conclusions of the study?*
 6. *What are the limitations of the study?*
 7. *What are the implications of the study?*
 8. *What are the future research directions?*
 9. *What are the contributions of the study?*
 10. *What are the key findings of the study?*

002 episodes of

